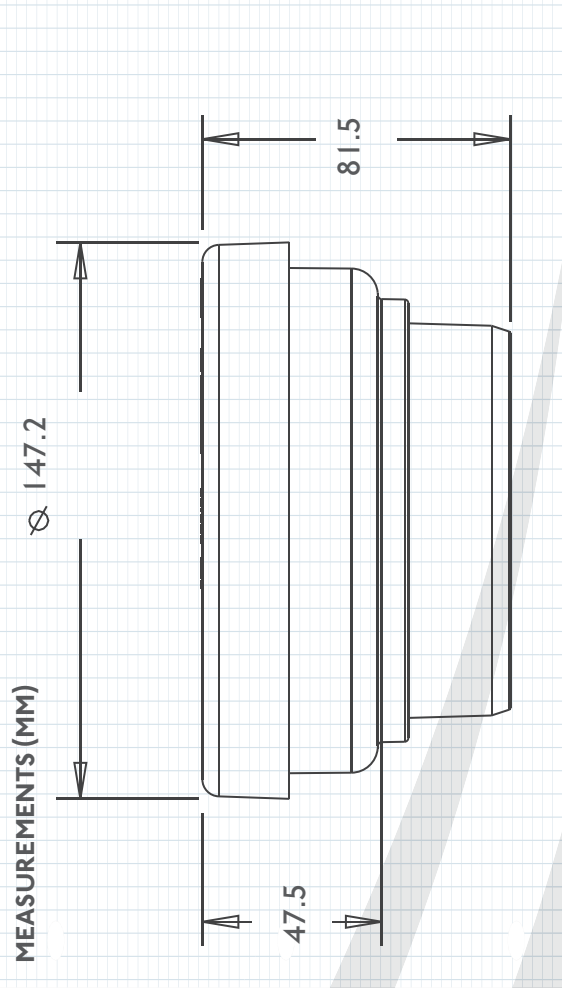
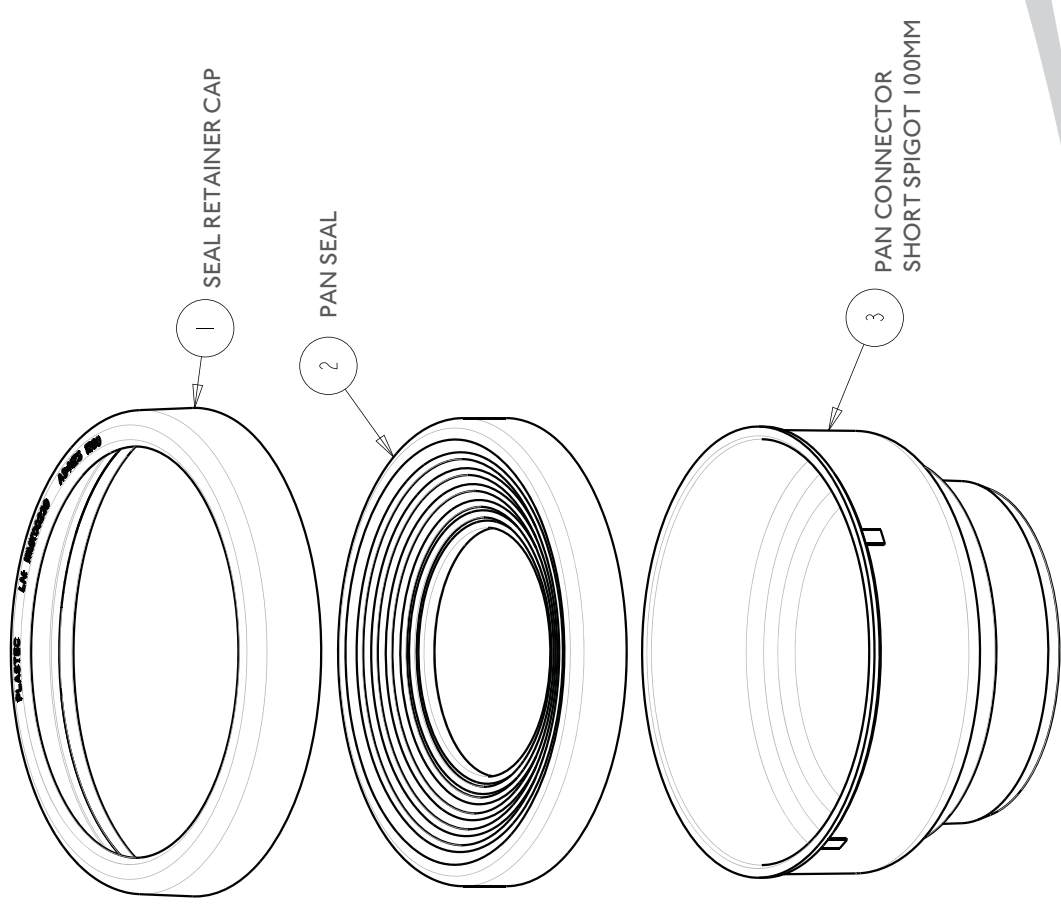


PAN CONNECTORS
100MM OFFSET - SHORT SPIGOT - SOLVENT WELD

- Solvent weld into 100mm DWV pipe.
- Ensure that the outlet of the WC doesn't come in contact with the base of the Pan Connector body.



ID	14926	100	68
----	-------	-----	----



NOTE: Plastec does not recommend the installation of Offset Pan Connectors to P trap installations and such use will void warranty.